

Virtual **Community Open House Meetings**

April 14, 2023

Meet the Speakers:



Michelle Johnson
Community Relations
Northern WI



Jim Sojka
Operations
Midwest Region



Amanda Schooling
Emergency Response
Midwest Region

Safety & Values Moment



About Enbridge

Delivery and Generation of North American Energy



Enbridge Story

A leading
energy delivery
company in
North America



Delivery and Generation of North American Energy

Energy Infrastructure Leader



~25%

of crude oil transported
in N. America

~20%

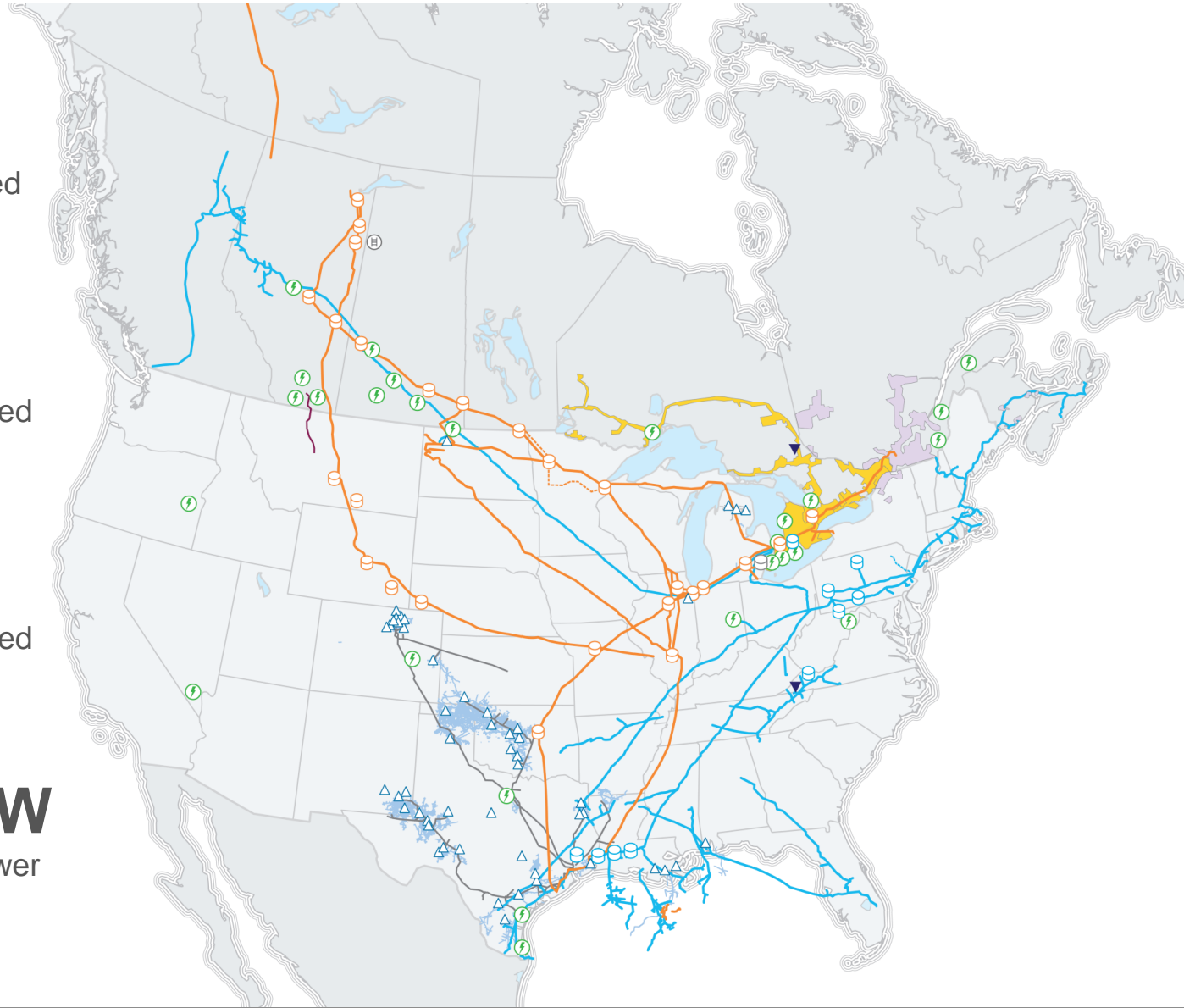
of natural gas consumed
in the U.S.

~2 Bcf/d

of natural gas distributed
in Ontario

5,192+ MW

of gross renewable power
generation



Delivering Crude Oil to Midwest Market and Beyond

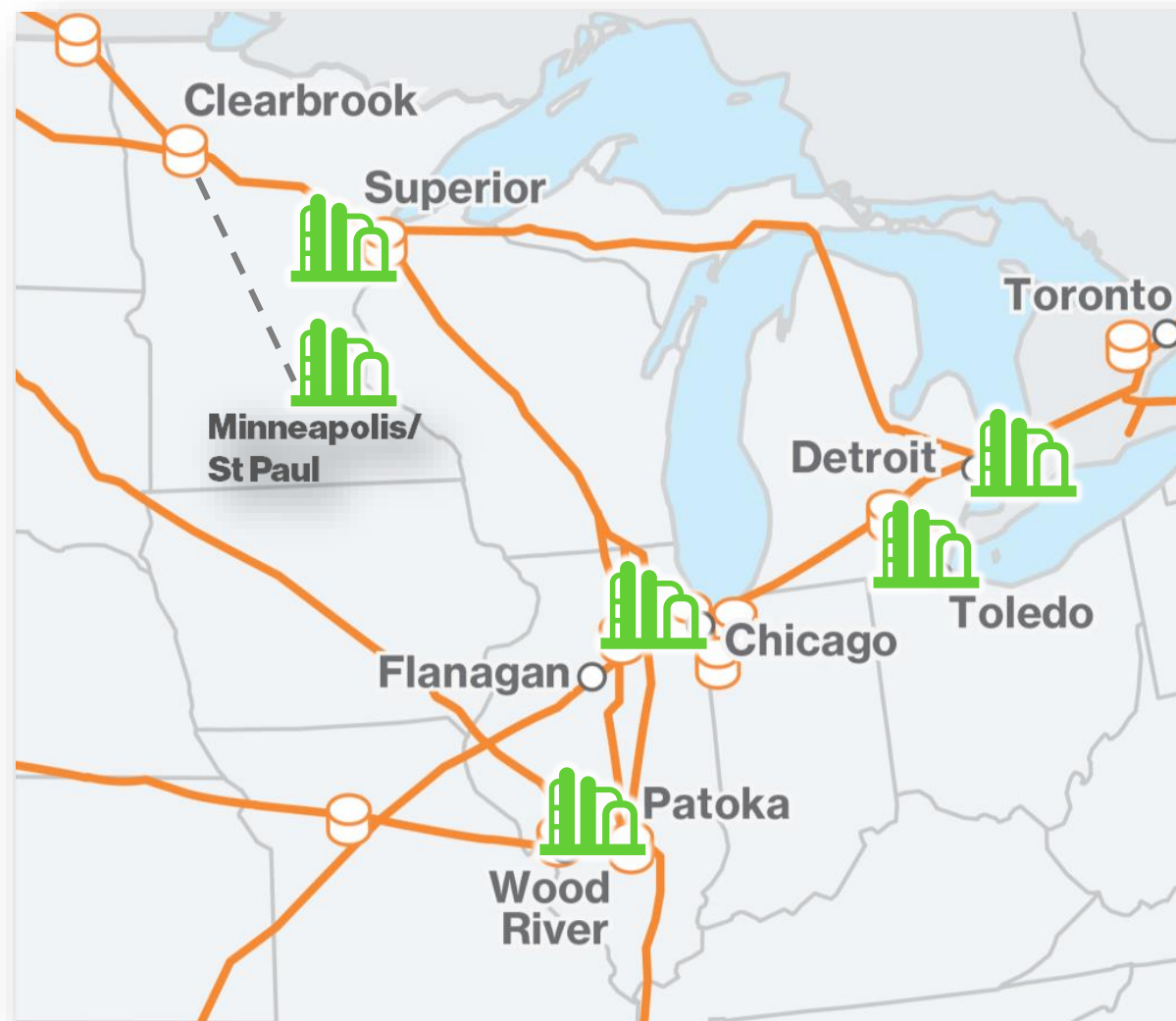
Enbridge: A Vital Link to Energy Supply



Enbridge meets:

~70%

Refining demand
in broader **Midwest**



Uses of Petroleum and the Petroleum Products We Use

Fueling Our Lives



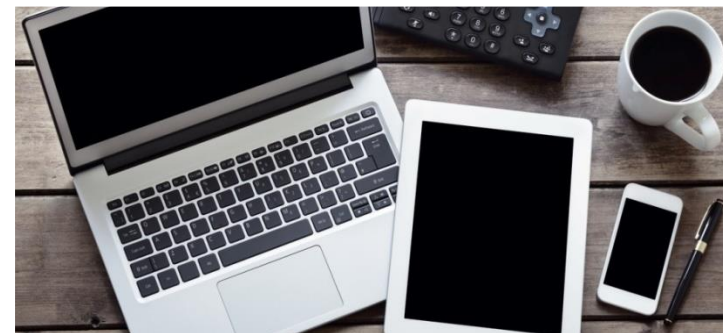
Household & transportation



Energy inputs



Everyday uses of energy



Community Investment In Wisconsin



- **\$334,200**
In community investment initiatives across Wisconsin in 2022
- **\$220.8 Million**
In capital, operating and administrative expenditures in Wisconsin in 2022
- **\$45 Million**
In property, corporate income and other taxes paid in Wisconsin in 2022
- **\$27.9 Million**
Total wages in 2022 to the 325 employees that live and work in Wisconsin

Pipeline Operations, Safety and Maintenance

Pipelines and Facilities

Enbridge in Wisconsin



Line 6A

A 467-mile pipeline carrying a variety of crude oil from Superior, WI to Lockport, IL.

Line 13

A 1,588-mile pipeline carrying diluent from Manhattan, IL to Edmonton, AB.

Line 14

A 467-mile pipeline carrying light and medium crude from Superior, WI to Mokena, IL.

Line 61

A 454-mile pipeline carrying a variety of crude oil from Superior, WI to Pontiac, IL.

Line 5

A 645-mile pipeline carrying light crude and natural gas liquids (NGL) from Superior, WI to Sarnia, ON.

Line 1

A 1,098-mile pipeline carrying NGL, refined products and light crude from Edmonton, AB to Superior, WI.

Line 2B

A 502-mile pipeline from Cromer, MB to Superior, WI carrying light crude. Line 2A, a 24" pipeline, originates in Edmonton, AB and connects with line 2B in Cromer.

Line 93

Part of a 1,097-mile pipeline currently carrying primarily light crude from Edmonton, AB to Superior, WI.

Line 93

Part of a 1,097-mile pipeline currently carrying primarily light crude from Edmonton, AB to Superior, WI.

Line 4

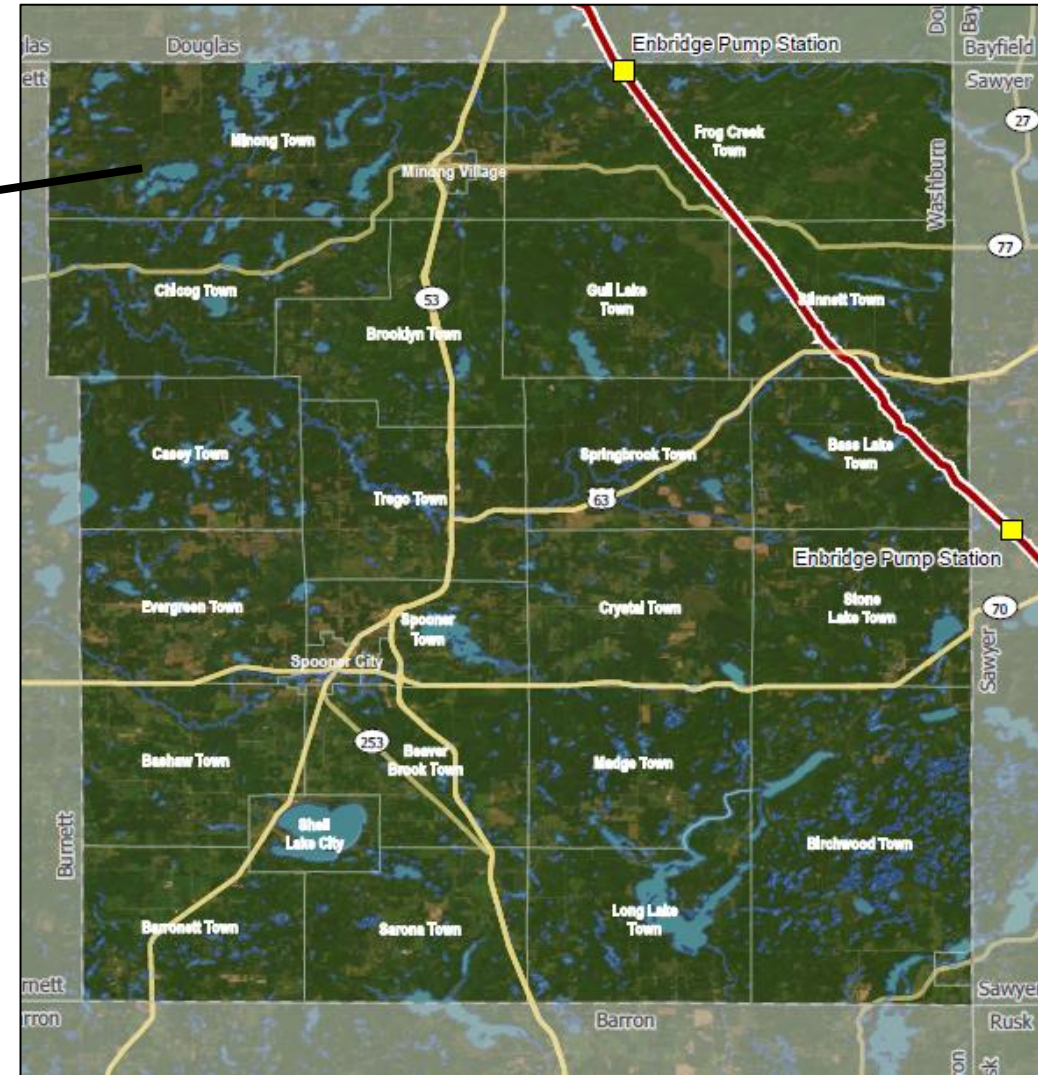
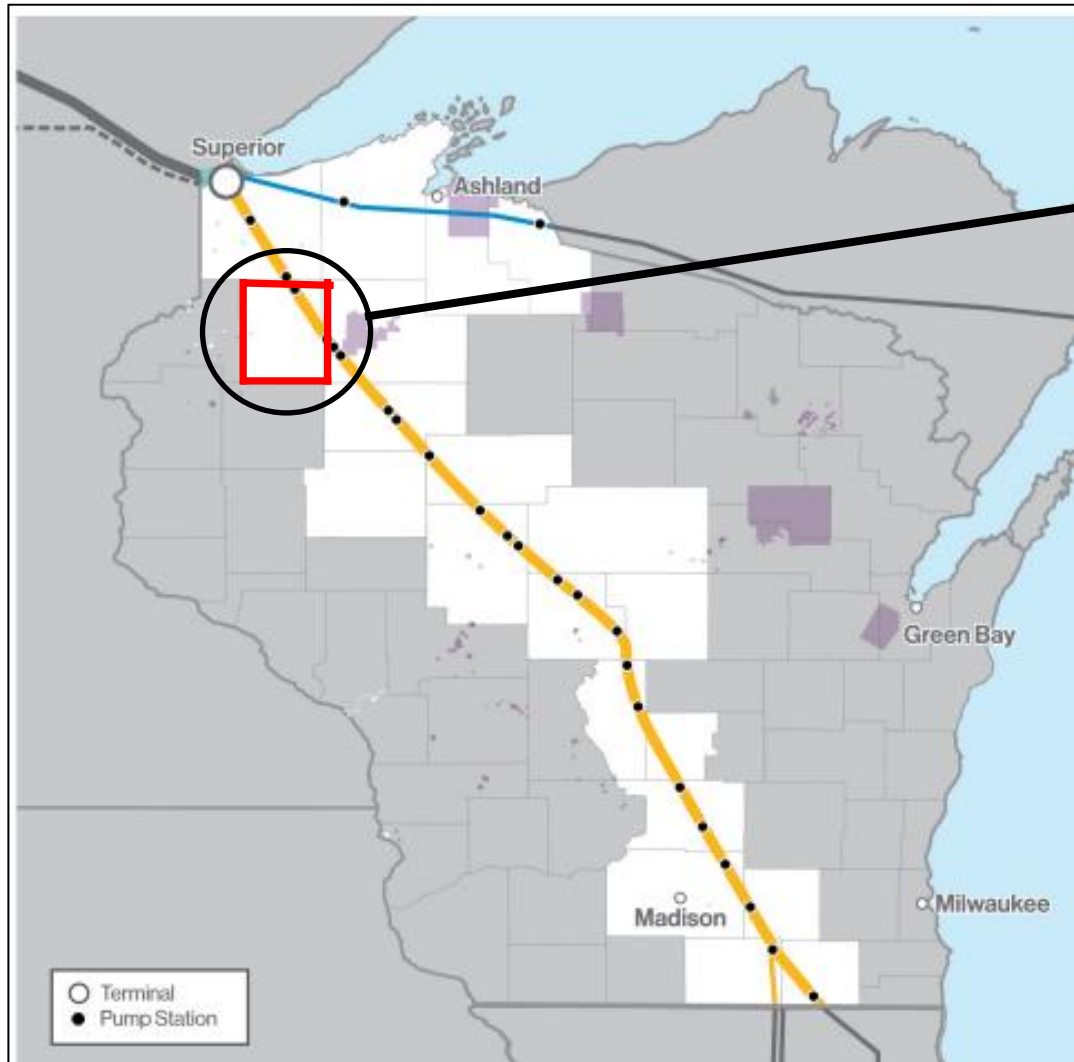
A 1,098-mile pipeline carrying a variety of crude oil from Edmonton, AB to Superior, WI.

Line 67

A 999-mile pipeline carrying heavy crude from Hardisty, AB to Superior, WI.

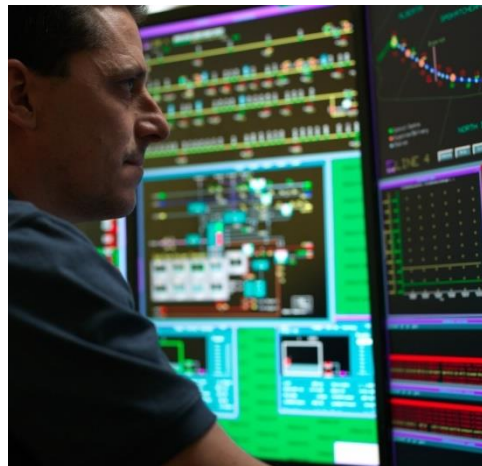
Current operations	Line 6A	Line 13	Line 14	Line 61	Line 5
Capacity: (thousands of barrels per day)	667	180	318	1,200	540
Pipe size:	34 inch	20 inch	24 inch	42 inch	30 inch
In-service:	1989	2010	1998	2009	1963
Current Operations	Line 1	Line 2B	Line 93	Line 4	Line 67
Capacity: (thousands of barrels per day)	237	442	390	796	800
Pipe size:	42 inch	22 inch	36 inch	24 inch	20 inch
In-service:	2009	2003	2015	2015	1962

Enbridge in Wisconsin- Washburn County



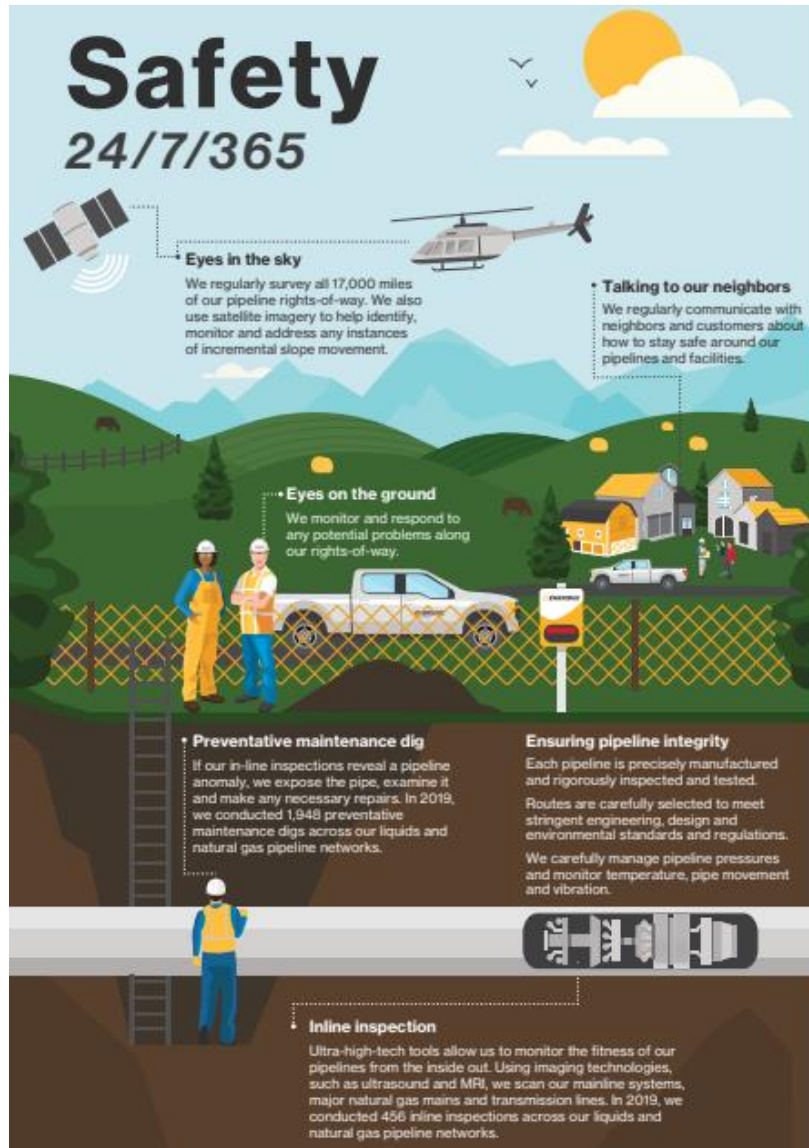
Preventative Pipeline Maintenance

- High quality materials and anti-corrosion coatings
- Cathodic protection and pressure testing
- Inspection programs and preventative maintenance
- Monitoring pipelines and facilities, and maintaining a clear right-of-way



The Safety of our Communities & Employees is our Top Priority

Operational Excellence

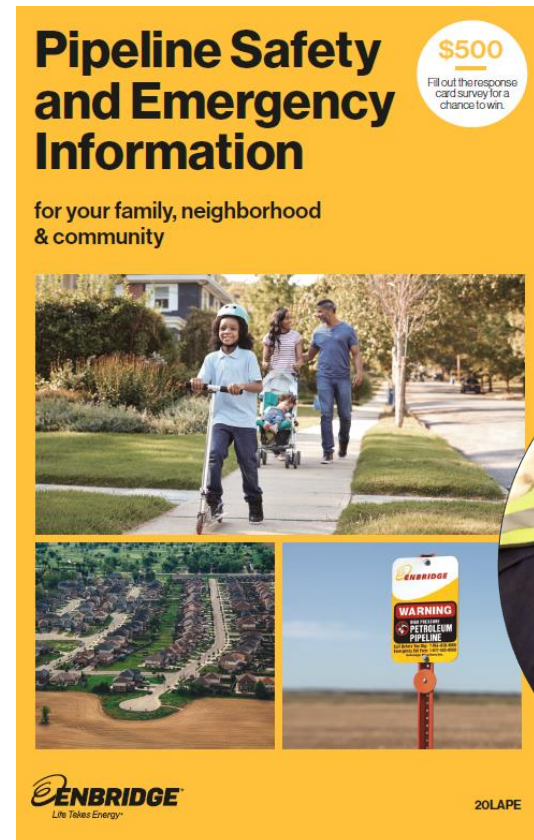


- \$1.3B The amount we spent on programs that help us to maintain the fitness of our systems across our operations in the U.S. and Canada
- 225 drills, exercises and emergency equipment deployments.
- \$60 million spent on equipment and training since 2012

Investing in Pipeline Safety and Operations



- Doubled the size of our Pipeline Control Systems and Leak Detection Departments
- Added staff and enhancing organizational structure at our Pipeline Control Center
- Significantly Enhanced our Public Awareness program
- Proactive and dynamic approach to pipeline integrity management



Our Commitment to the Environment

Planning projects with care

- Field survey crews
- Wildlife protection strategies
- Routing along existing corridors
- Consulting with Tribal Governments and groups

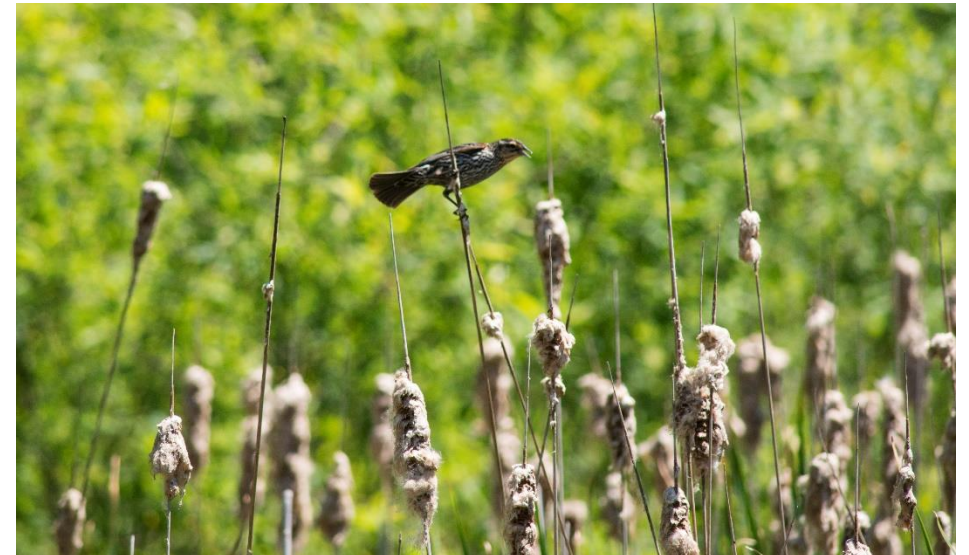
Limiting the construction footprint

- Use existing routes to and from construction sites
- Minimal ground disturbance practices
- Minimize amount of temporary work space
- Wildlife protection initiatives
- Restricting access to project areas

Our post-construction commitment

- Environmental monitoring programs
- Landowner consultations
- Habitat restoration techniques

The safety of people,
and protection of the environment,
is our top priority at Enbridge.



Safety Begins with Public Awareness

For Your Safety and the Safety of Others

Call 811 Before You Dig



- 811 is a free, nationwide number designed to keep you safe when digging or excavating
- Calling 811 is a simple process and is always the safest option anytime you are moving dirt
- You can visit call811.com to find out if online locate requests can be made for the state where you will be working.



**Know what's below.
Call before you dig.**

Did you know? It's never safe to assume the depth of pipelines.

- Pipeline depth can vary or change due to erosion, previous digging projects and other factors
- Some pipelines and related facilities may be located above the ground
- If a product is released from the pipeline, it could damage your property
- If the product released comes into contact with you or ignites, it could cause injuries or even death

Safety Begins with Awareness

- Other products may also be transported by other pipeline operators in this area
- Product transported in the pipeline is always listed on any pipeline marker
- Familiarize yourself with the products and operators in your area



National Pipeline Mapping System NPMS and Enbridge Resources



National Pipeline Mapping System:

www.npms.phmsa.dot.gov

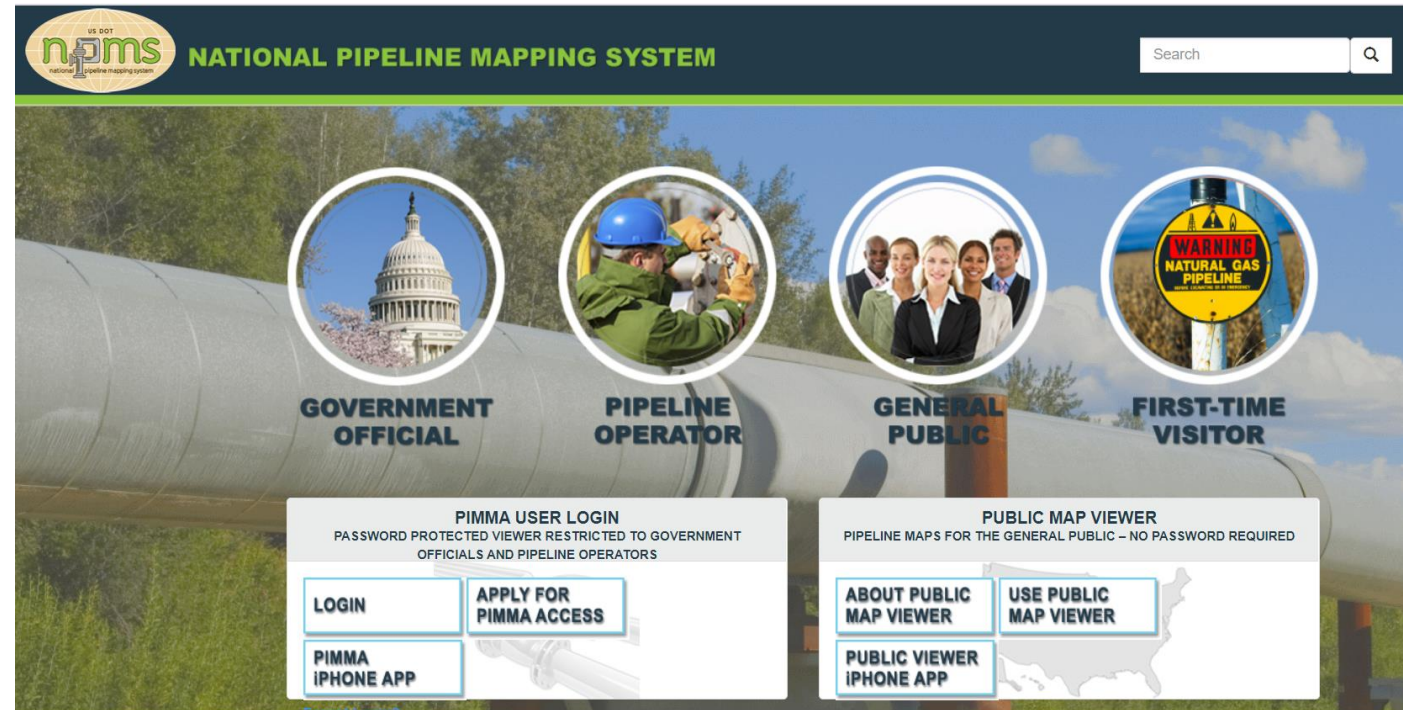
Enbridge Land Services:

Todd Ochsner

Senior Advisor, Lands and Right of Way

Phone (715) 395-3813

Todd.Oshsner@enbridge.com

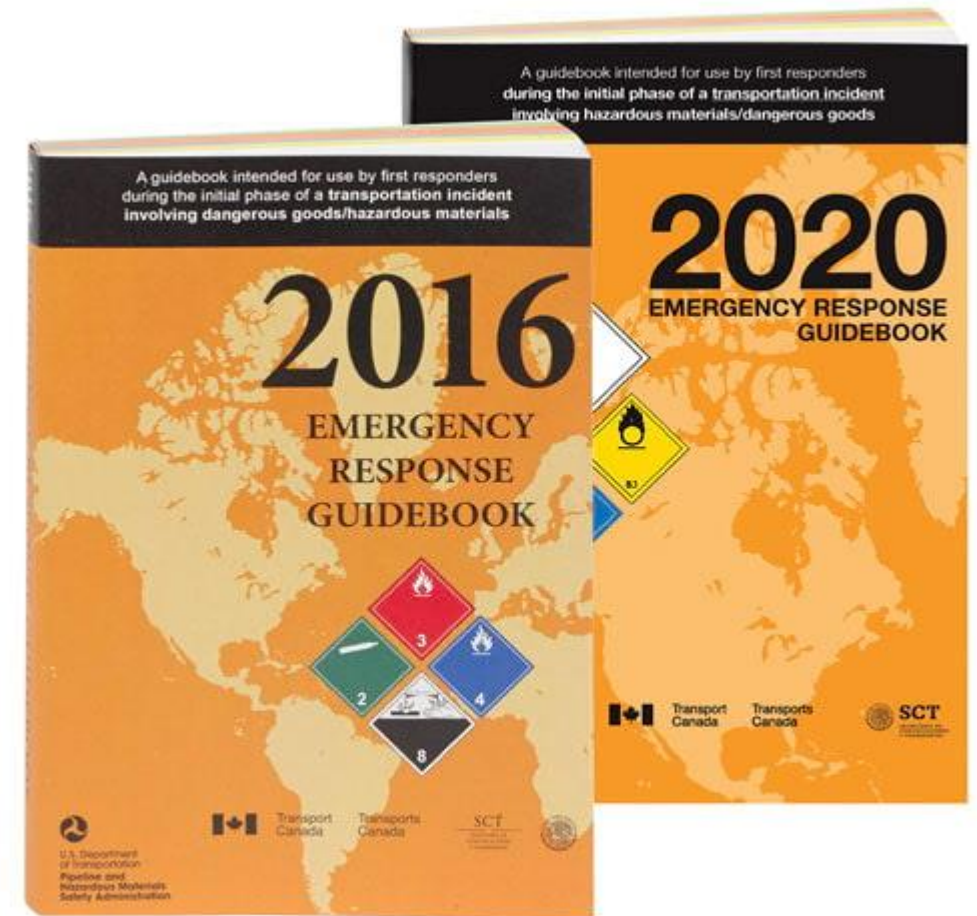


What to Know About the Products We Transport

Product Characteristics

Crude Oil

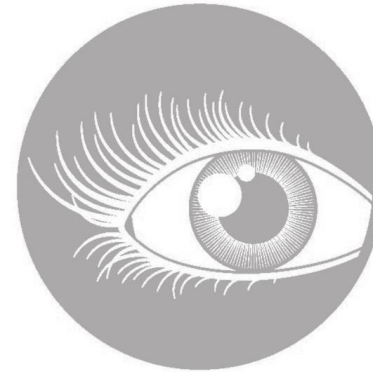
- Unrefined petroleum
- Color can range from yellow to black
- Flows with the land profile
- Can be thick and slow moving or light and able to move quickly
- May contain hydrogen sulfide (H₂S) and benzene



An updated ERG is published every 4 years

What Do I Need to Know?

- You might see
 - Dead or discolored vegetation or snow
 - Colorful sheens on water
 - Stains or pools of hydrocarbons or liquids
 - Dirt being blown into the air
 - Fire coming out of the ground
 - Dead animals or insects
 - Construction or excavation equipment nearby
- You might hear
 - An unusual hissing or roaring sound along a pipeline right-of-way
- You might smell
 - An unusual rotten egg odor



Reporting a Release and Obtaining Information What Do I Need to Know?



To Report a Release:

- Call 911
- Call Enbridge
800-858-5253
- National Response Center
800-424-8802
- EPA, Region 5 - WI
312-353-2318
- Enbridge.com
- www.facebook.com/enbridge
- Twitter: @Enbridge
- Or, epa.gov/emergency-response/emergency-response-my-community

If you can do so safely, turn off any mechanized equipment. Move as far away from the leak as possible in an upwind direction, avoiding contact with escaping liquids and gases.

Emergency Response

Response Planning with Federal, State and Local Interest

Planning Integration



- Enbridge works closely with Federal, State and Local interests during:
 - Training
 - Exercises
 - Plan Development
- Incident Command System
- Unified Command



Response Equipment **Prepared to Respond**



- Enbridge keeps spill response equipment in strategically placed caches throughout our pipeline system.
- In addition, we have contract agreements with federally certified response organizations, also known as Oil Spill Removal Organizations (OSROs), that can assist us in the event of a large spill.



What to do if you suspect a pipeline leak:

- **Make sure you're safe**
- **Call 911**
- **Call Enbridge emergency response number**
- **Follow instructions provided**

How to report a spill to Enbridge, NRC and the EPA:

- **Enbridge: 800-858-5253**
- **NRC: 800-424-8802**
- **EPA, Region 5 (WI): 312-353-2318**

How do you obtain information:

- **Enbridge.com**
- **facebook.com/enbridge**
- **Twitter: @Enbridge**
- **epa.gov/emergency-response/emergency-response-my-community**

Q&A

For more information, please visit:

www.enbridge.com/WisconsinHandouts

Email us:

EnbridgeInWI@enbridge.com

A copy of this presentation will be available for download at:

www.EnbridgeConnect.com