

# Virtual **Community Open House Meetings**

## Meet the speakers:



**Emily Cutka**

Sr. Community Engagement Advisor  
Great Lakes Region



**Gary Kneisl**

Emergency Response Coordinator  
Midwest Region



**Sabrin Zayed**

Supervisor Manhattan Area  
Great Lakes Region

# Safety & Values Moment



# About Enbridge

---

Delivery and Generation of North American Energy



# Enbridge Story

A leading  
energy delivery  
company in  
North America



# Delivery and Generation of North American Energy

## Energy Infrastructure Leader



**~25%**

of crude oil transported  
in N. America

**~20%**

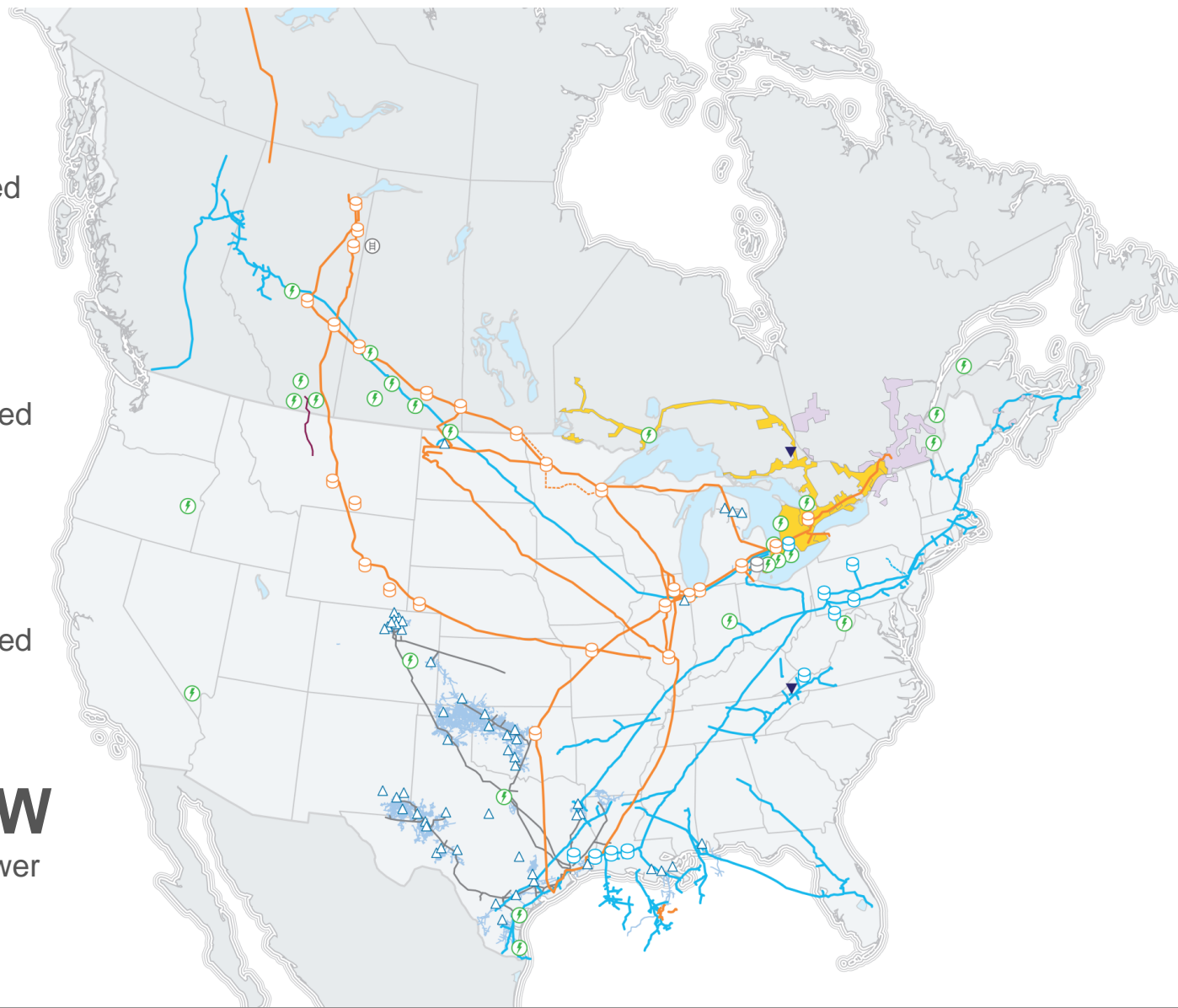
of natural gas consumed  
in the U.S.

**~2 Bcf/d**

of natural gas distributed  
in Ontario

**5,192+ MW**

of gross renewable power  
generation



Delivering Crude Oil to Midwest Market and Beyond

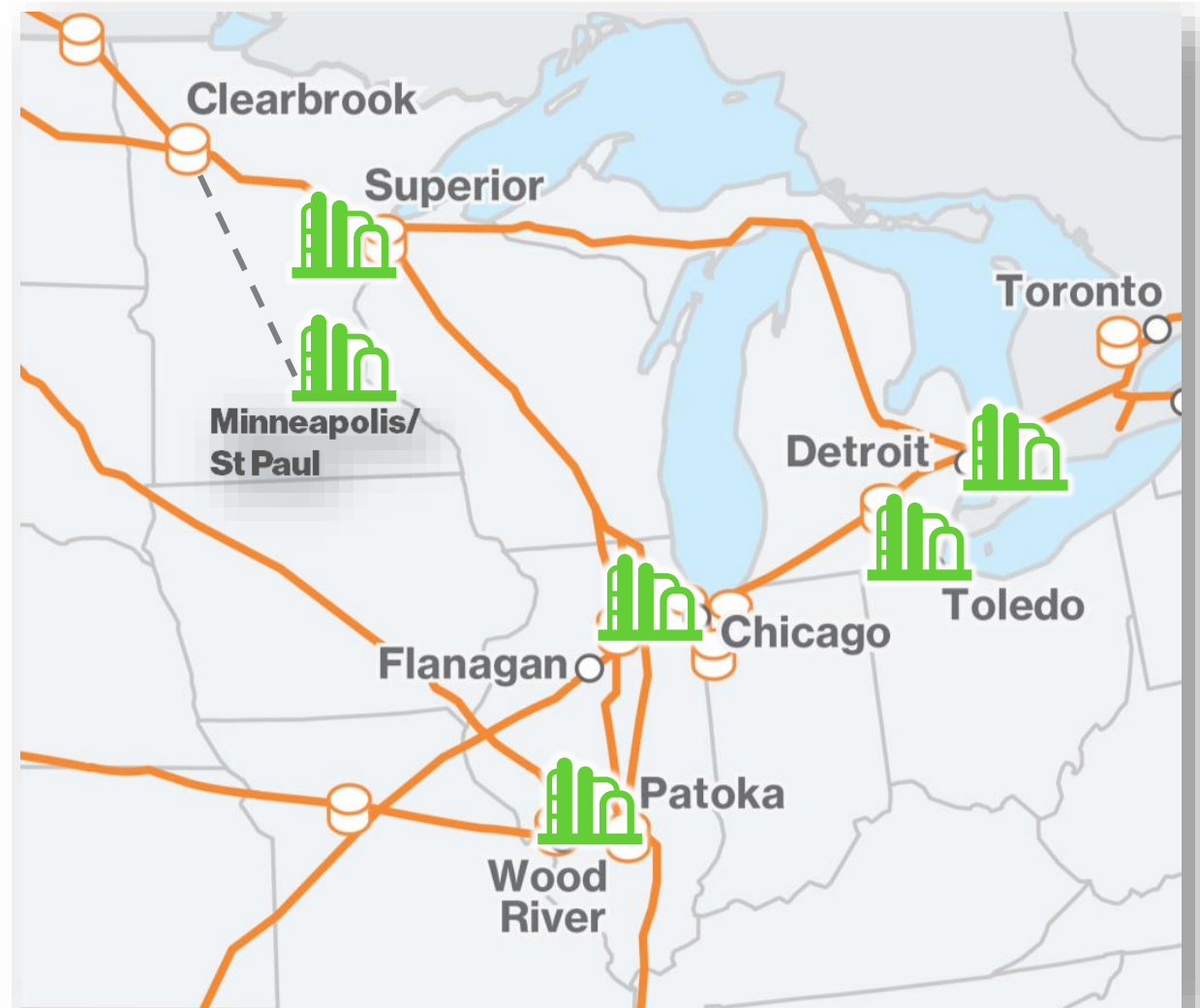
## Enbridge: A Vital Link to Energy Supply



Enbridge meets:

**~70%**

Refining demand  
in broader **Midwest**



# Uses of Petroleum and the Petroleum Products We Use

## Fueling Our Lives



### Household & transportation



### Energy inputs



### Everyday uses of energy



Our Commitment to Being a Good Neighbor

## Community Investment In Illinois



- **\$237,000**  
In community and safety strengthening initiatives across Illinois in 2022
- **\$421.8 Million**  
In operating and administrative expenditures in Illinois in 2022
- **\$205.2 Million**  
In Capital expenditures in Illinois in 2022
- **\$680.2 Million**  
In property, corporate income and other taxes paid in Illinois in 2022
- **\$8.7 Million**  
In total wages in 2022 to the 102 employees that live and work in Illinois

# Pipeline Operations, Safety and Maintenance

---

# Pipelines and Facilities

## Enbridge in Illinois



### Line 6A

A 467-mile pipeline carrying a variety of crude oil from Superior, WI to Griffith, IN.

### Line 13

A 1,588-mile pipeline carrying diluent from Manhattan, IL to Edmonton, AB.

### Line 14

A 467-mile pipeline carrying light and medium crude oil from Superior, WI to Griffith, IN.

### Line 55

A 575-mile pipeline carrying a variety of crude oil from Pontiac, IL to Cushing, OK.

### Line 59

A 593-mile pipeline carrying light and heavy crudes from Pontiac, IL to Cushing, OK.

### Line 61

A 454-mile pipeline, carrying a variety of crude oil from Superior, WI to Pontiac, IL.

### Line 62

A 75-mile pipeline carrying light and heavy crude oil from Pontiac, IL to Schererville, IN.

### Line 78

A 79-mile pipeline carrying light and heavy crude oil from Pontiac, IL to Griffith, IN.

### Line 63

A 168-mile pipeline carrying a variety of crude oil from Pontiac, IL to Patoka, IL.

### Line 41

A 993-mile pipeline carrying a variety of crude oil from Casper, WY to Wood River, IL.



### Alliance pipeline

A 2,391-mile natural gas transmission pipeline system from northwestern Alberta to Joliet, IL.

### Vector

A 348-mile natural gas transmission pipeline system from Joliet, IL to Sarnia, ON with deliveries in Indiana and Michigan.

### Texas eastern transmission

A 9,000-mile natural gas pipeline connecting Texas and Gulf Coast with the U.S. Mid-Atlantic and Northeast states.

Current operations	Line 6A	Line 13	Line 14	Line 55	Line 59
Capacity: (thousands of barrels per day)	667	180	318	193	600
Pipe size:	34 inch	20 inch	24 inch	22/24 inch	36 inch
In-service:	1969	2010	1988	2003	2014
Current operations	Line 61	Line 62	Line 78	Line 63	Line 41
Capacity: (thousands of barrels per day)	1,200	235	570	300	145
Pipe size:	42 inch	22 inch	36 inch	24 inch	20 inch
In-service:	2009	2003	2015	2015	1952
Current operations	Alliance pipeline		Vector pipeline	Texas eastern	
Capacity: (billion cubic feet per day)	1.6		1.3	11.6	
Pipe size:	36 inch		36/42 inch	30 inch	
In-service:	2000		2000		

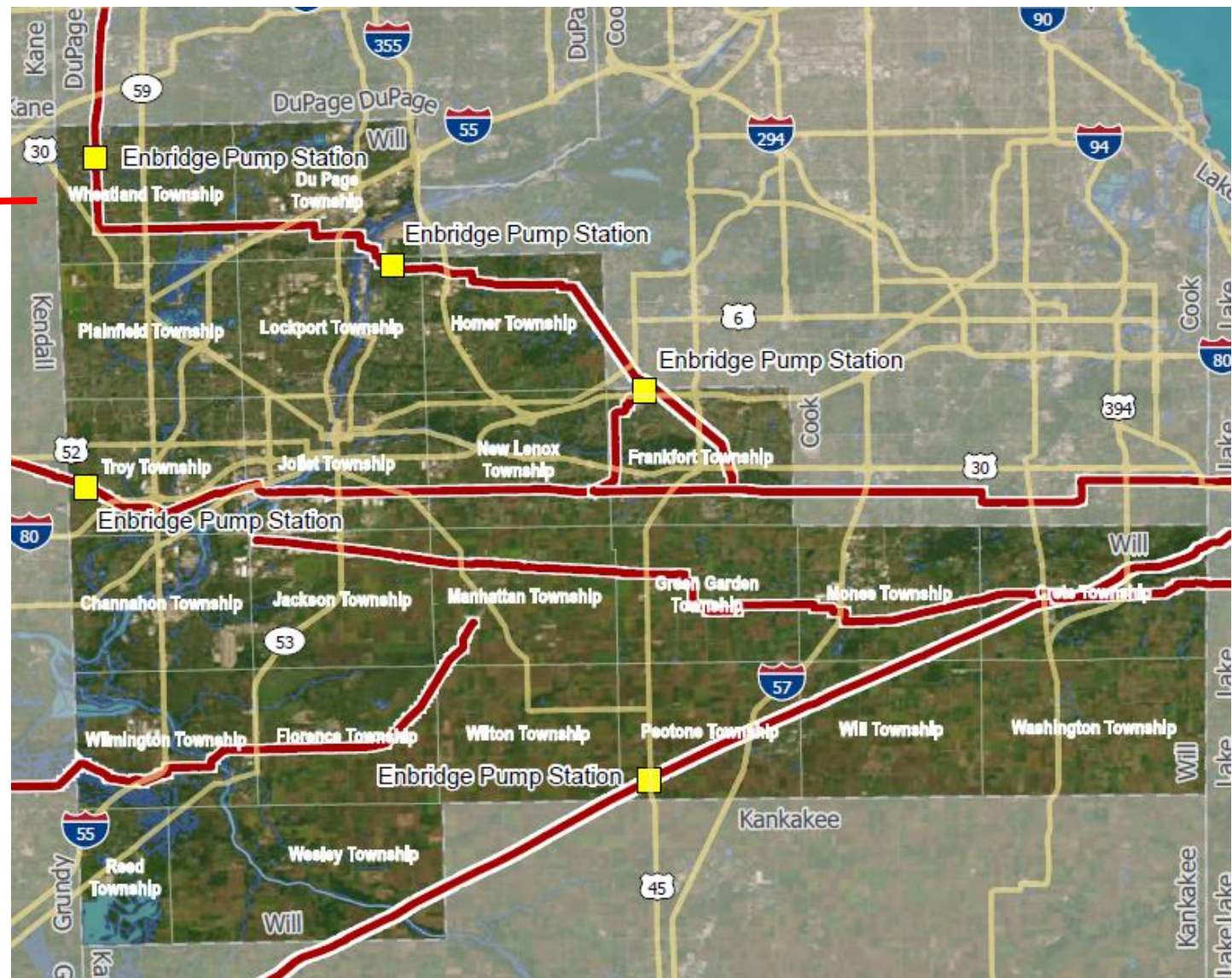
# Enbridge in Illinois- Kane County



# Enbridge in Illinois- DuPage County



# Enbridge in Illinois- Will County



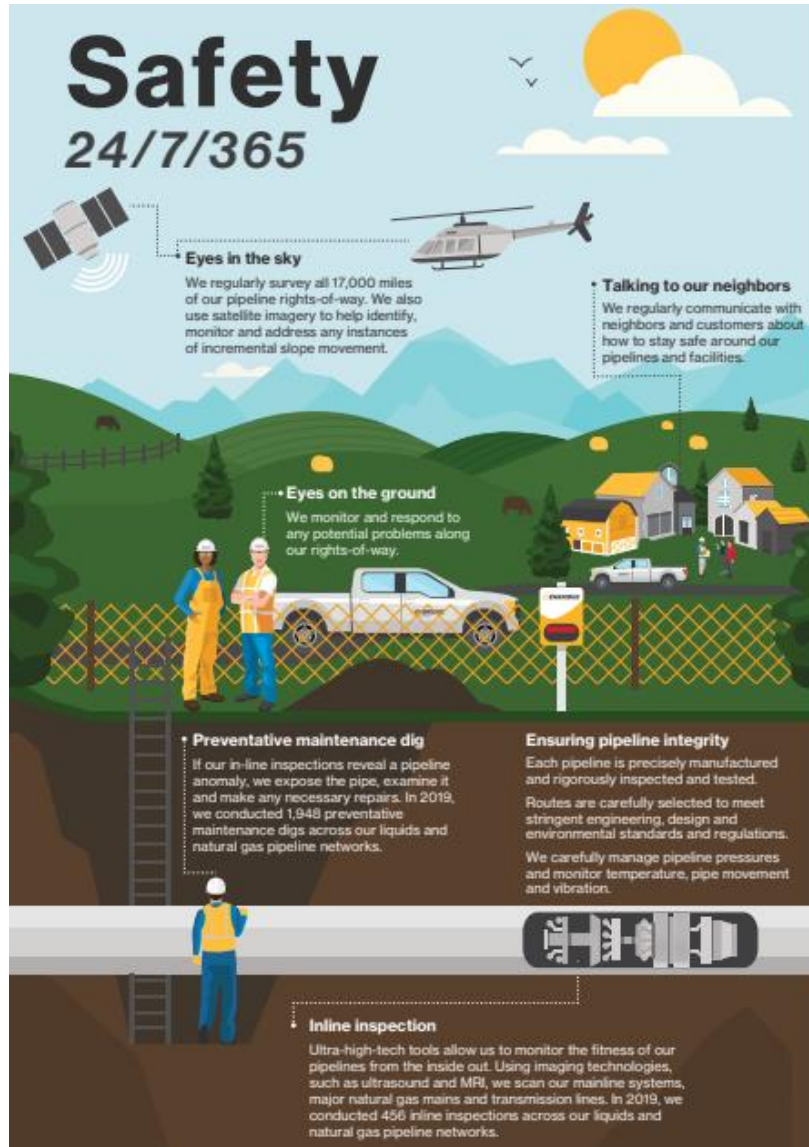
# Preventative Pipeline Maintenance

- High quality materials and anti-corrosion coatings
- Cathodic protection and pressure testing
- Inspection programs and preventative maintenance
- Monitoring pipelines and facilities, and maintaining a clear right-of-way



# The Safety of our Communities & Employees is our Top Priority

## Operational Excellence

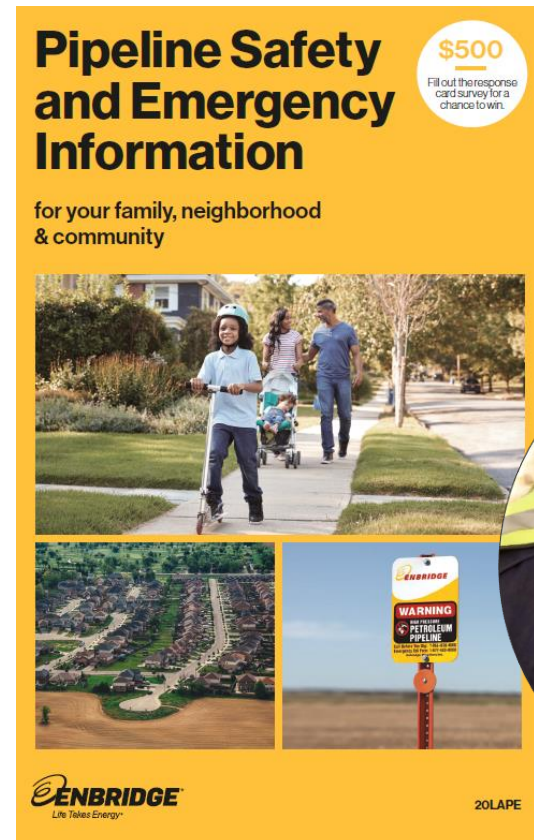


- \$1.3B The amount we spent on programs that help us to maintain the fitness of our systems across our operations in the U.S. and Canada
- 225 drills, exercises and emergency equipment deployments.
- \$60 million spent on equipment and training since 2012

# Investing in Pipeline Safety and Operations



- Doubled the size of our Pipeline Control Systems and Leak Detection Departments
- Added staff and enhancing organizational structure at our Pipeline Control Center
- Significantly Enhanced our Public Awareness program
- Proactive and dynamic approach to pipeline integrity management



# Our Commitment to the Environment



## Planning projects with care

- Field survey crews
- Wildlife protection strategies
- Routing along existing corridors
- Consulting with Tribal Governments and groups

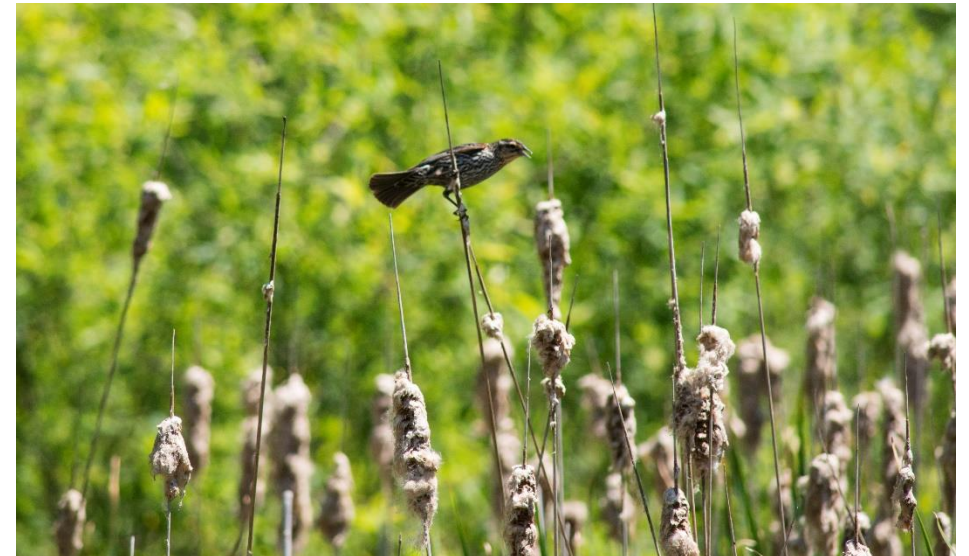
## Limiting the construction footprint

- Use existing routes to and from construction sites
- Minimal ground disturbance practices
- Minimize amount of temporary work space
- Wildlife protection initiatives
- Restricting access to project areas

## Our post-construction commitment

- Environmental monitoring programs
- Landowner consultations
- Habitat restoration techniques

The safety of people,  
and protection of the environment,  
is our top priority at Enbridge.



# Safety Begins with Public Awareness

---

# For Your Safety and the Safety of Others

## Call 811 Before You Dig



- 811 is a free, nationwide number designed to keep you safe when digging or excavating
- Calling 811 is a simple process and is always the safest option anytime you are moving dirt
- You can visit [call811.com](https://call811.com) to find out if online locate requests can be made for the state where you will be working.



**Know what's below.  
Call before you dig.**

***Did you know?*** It's never safe to assume the depth of pipelines.

- Pipeline depth can vary or change due to erosion, previous digging projects and other factors
- Some pipelines and related facilities may be located above the ground
- If a product is released from the pipeline, it could damage your property
- If the product released comes into contact with you or ignites, it could cause injuries or even death

## Safety Begins with Awareness

- Other products may also be transported by other pipeline operators in this area
- Product transported in the pipeline is always listed on any pipeline marker
- Familiarize yourself with the products and operators in your area



# National Pipeline Mapping System NPMS and Enbridge Resources



## National Pipeline Mapping System:

[www.npms.phmsa.dot.gov](http://www.npms.phmsa.dot.gov)

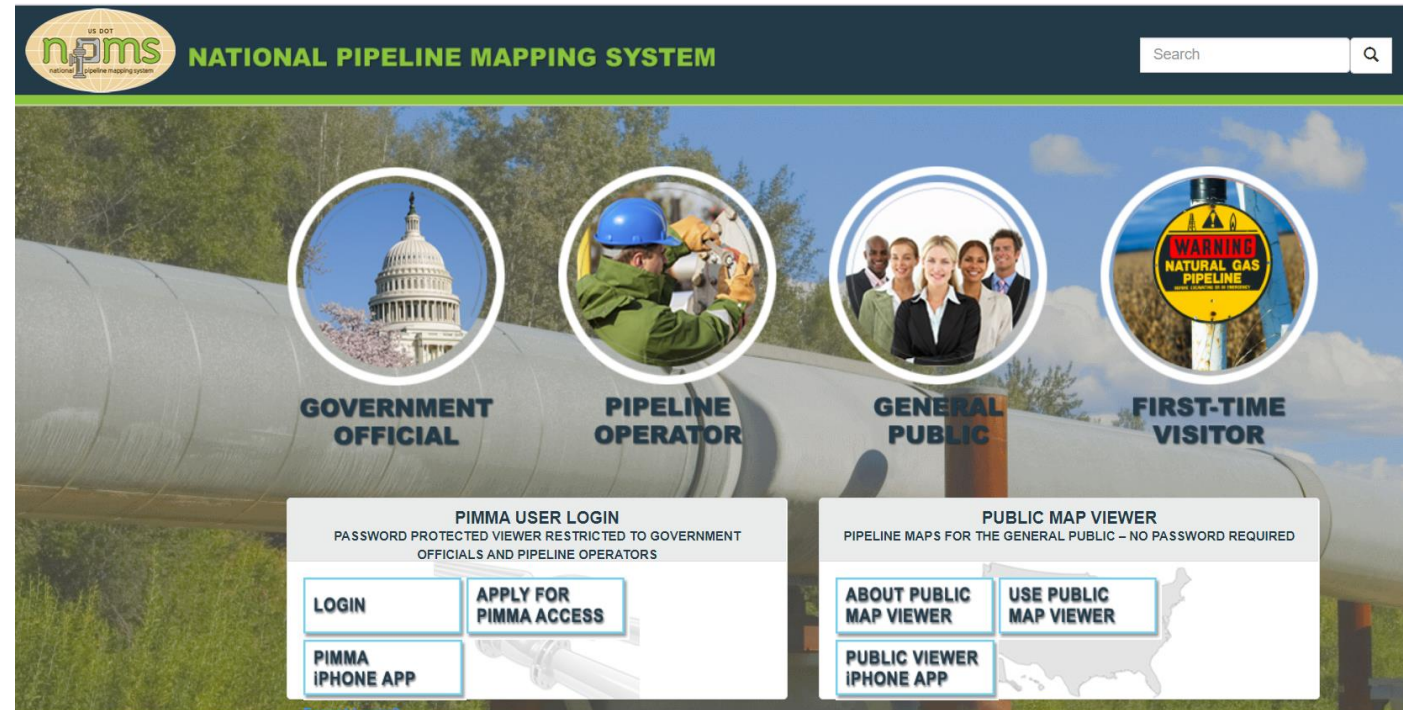
## Enbridge Land Services:

**Adam Depew**

Advisor, Lands and Right of Way

Phone: 219-864-5476

[Adam.Depew@enbridge.com](mailto:Adam.Depew@enbridge.com)

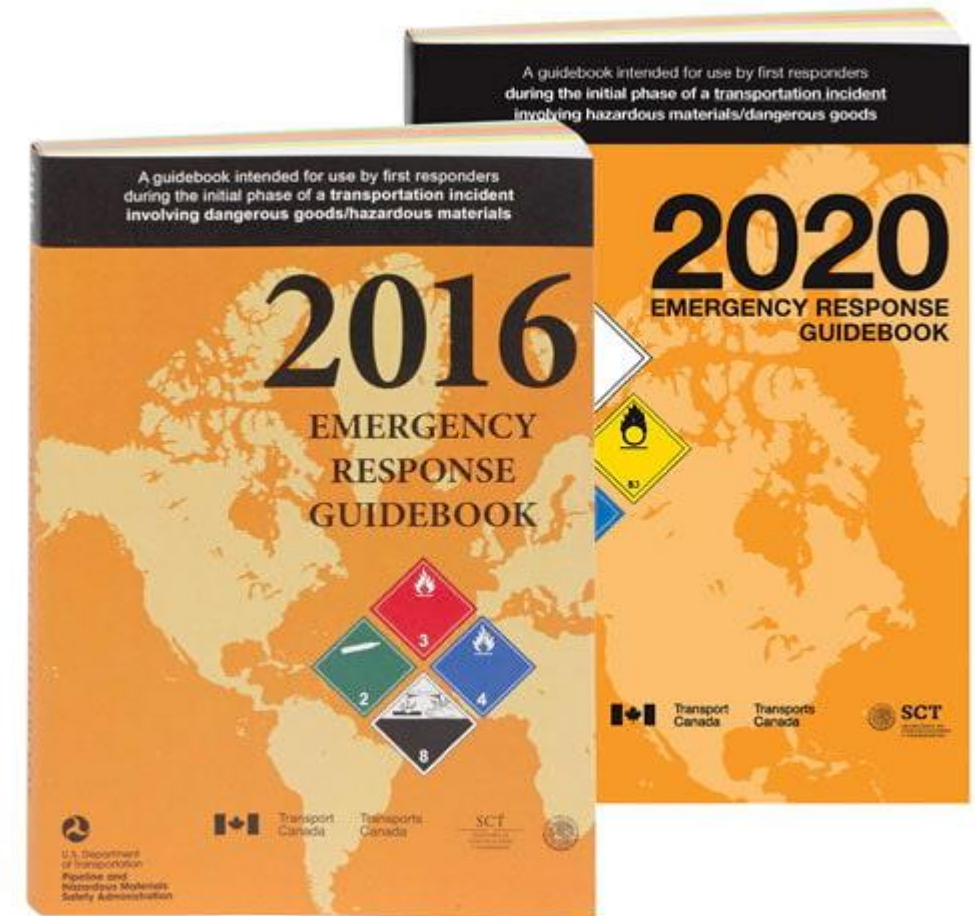


# What to Know About the Products We Transport

## Product Characteristics

### Crude Oil

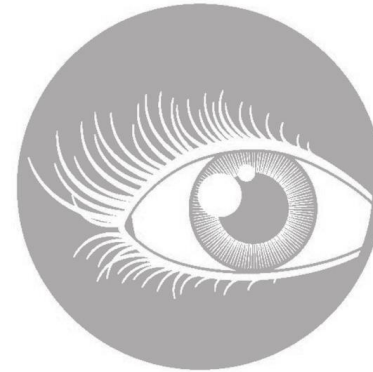
- Unrefined petroleum
- Color can range from yellow to black
- Flows with the land profile
- Can be thick and slow moving or light and able to move quickly
- May contain hydrogen sulfide (H<sub>2</sub>S) and benzene



*An updated ERG is published every 4 years*

# What Do I Need to Know?

- You might see
  - Dead or discolored vegetation or snow
  - Colorful sheens on water
  - Stains or pools of hydrocarbons or liquids
  - Dirt being blown into the air
  - Fire coming out of the ground
  - Dead animals or insects
  - Construction or excavation equipment nearby
- You might hear
  - An unusual hissing or roaring sound along a pipeline right-of-way
- You might smell
  - An unusual rotten egg odor



# Reporting a Release and Obtaining Information

## What Do I Need to Know?



### To Report a Release:

- Call 911
- Call Enbridge  
**800-858-5253**
- National Response Center  
**800-424-8802**
- EPA, Region 5 - IL  
**312-353-2318**
- Enbridge.com
- [www.facebook.com/enbridge](https://www.facebook.com/enbridge)
- Twitter: @Enbridge
- Or, [epa.gov/emergency-response/emergency-response-my-community](https://epa.gov/emergency-response/emergency-response-my-community)

If you can do so safely, turn off any mechanized equipment. Move as far away from the leak as possible in an upwind direction, avoiding contact with escaping liquids and gases.

# Emergency Response

---

# Response Planning with Federal, State and Local Interest

## Planning Integration



- Enbridge works closely with Federal, State and Local interests during:
  - Training
  - Exercises
  - Plan Development
- Incident Command System
- Unified Command



## Response Equipment **Prepared to Respond**



- Enbridge keeps spill response equipment in strategically placed caches throughout our pipeline system.
- In addition, we have contract agreements with federally certified response organizations, also known as Oil Spill Removal Organizations (OSROs), that can assist us in the event of a large spill.



## What to do if you suspect a pipeline leak:

- **Make sure you're safe**
- **Call 911**
- **Call Enbridge emergency response number**
- **Follow instructions provided**

## How to report a spill to Enbridge, NRC and the EPA:

- **Enbridge: 800-858-5253**
- **NRC: 800-424-8802**
- **EPA, Region 5 (IL): 312-353-2318**

## How do you obtain information:

- **Enbridge.com**
- **facebook.com/enbridge**
- **Twitter: @Enbridge**
- **epa.gov/emergency-response/emergency-response-my-community**

# Q&A

**For more information, please visit:**

[www.enbridge.com/IllinoisHandouts](http://www.enbridge.com/IllinoisHandouts)

**Email us:**

[EnbridgeInIL@enbridge.com](mailto:EnbridgeInIL@enbridge.com)

A copy of this presentation will be available for download at:

[www.EnbridgeConnect.com](http://www.EnbridgeConnect.com)